

ARRIVAL TIMES

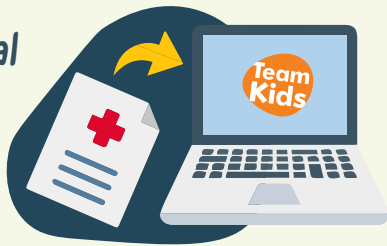


ARRIVE BY 9AM



MEDICAL INFO

Upload medical plans to your TeamKids account



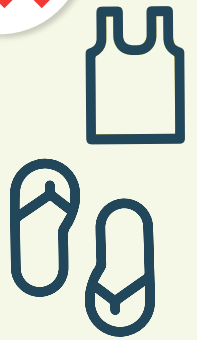
Complete a risk minimisation form with staff on your first day

Bring medication in original packaging



LABEL IT CLEARLY

WHAT TO WEAR



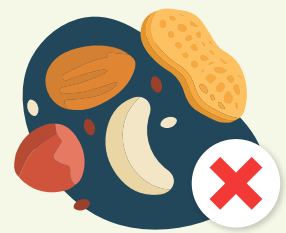
LUNCH & SNACKS



Bring lunch and refillable water bottle



Delicious morning and afternoon tea are provided



Be allergy aware and please don't bring nuts

ARRIVAL TIMES

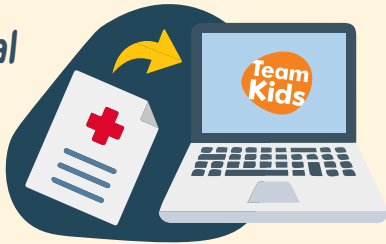


ARRIVE BY 9AM



MEDICAL INFO

Upload medical plans to your TeamKids account



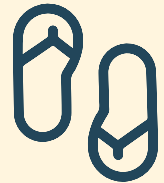
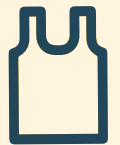
Complete a risk minimisation form with staff on your first day

Bring medication in original packaging



LABEL IT CLEARLY

WHAT TO WEAR



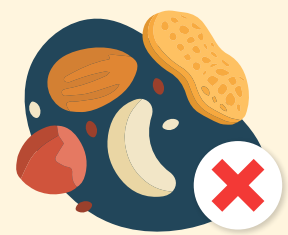
LUNCH & SNACKS



Bring lunch and refillable water bottle



Delicious morning and afternoon tea are provided



Be allergy aware and please don't bring nuts

ARRIVAL TIMES

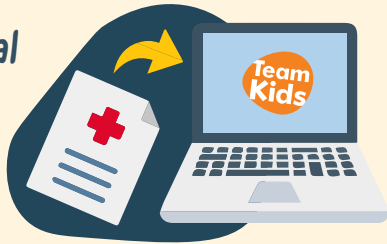


ARRIVE BY 9AM



MEDICAL INFO

Upload medical plans to your TeamKids account



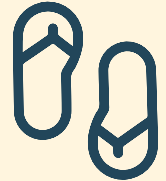
Complete a risk minimisation form with staff on your first day

Bring medication in original packaging



LABEL IT CLEARLY

WHAT TO WEAR



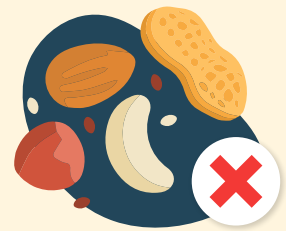
LUNCH & SNACKS



Bring lunch and refillable water bottle



Delicious morning and afternoon tea are provided



Be allergy aware and please don't bring nuts

ARRIVAL TIMES

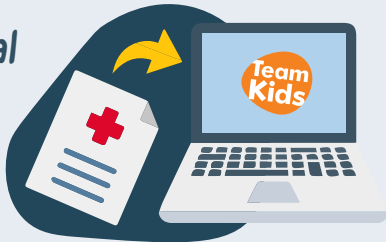


ARRIVE BY 9AM



MEDICAL INFO

Upload medical plans to your TeamKids account



Complete a risk minimisation form with staff on your first day

Bring medication in original packaging



LABEL IT CLEARLY

WHAT TO WEAR



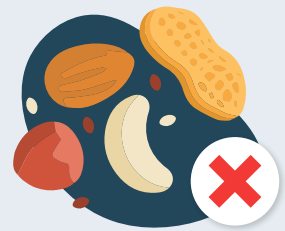
LUNCH & SNACKS



Bring lunch and refillable water bottle



Delicious morning and afternoon tea are provided



Be allergy aware and please don't bring nuts